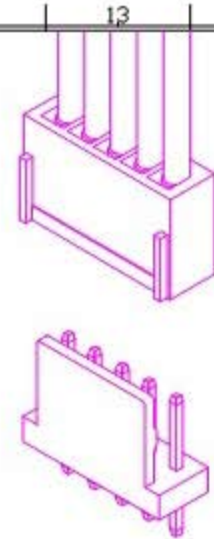
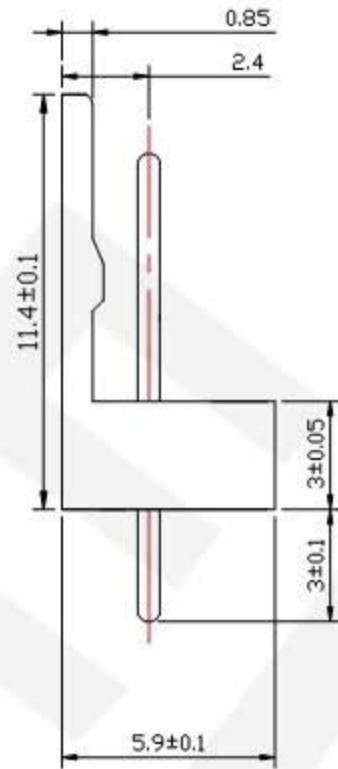
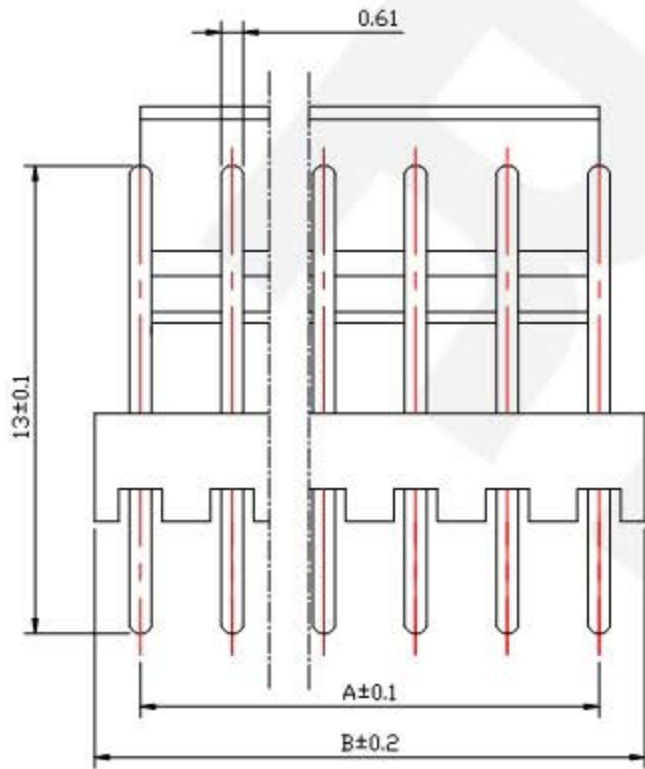
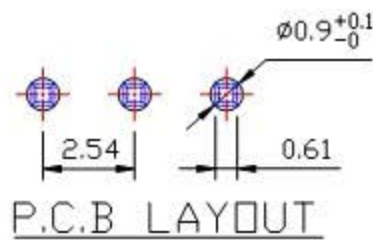


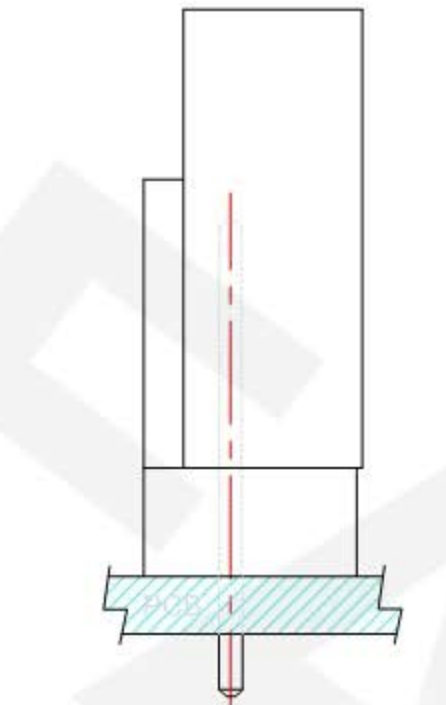
RoHS_{2.0}



3D View



P.C.B LAYOUT



ASSEMBLY LAYOUT

50.8	48.26	20
25.40	22.86	10
22.86	20.32	9
20.32	17.78	8
17.78	15.24	7
15.24	12.70	6
12.70	10.16	5
10.16	7.62	4
7.62	5.08	3
5.08	2.54	2
B	A	PIN

Specifications:

Rated Current	3A AC,DC (AWG #22)				角度	±3°	设计		
Rated Voltage	250V AC,DC				63 < L	±0.3°	审核		
Contact Resistance	20MΩ max				16 < L ≤ 63	±0.2°	核准		
Insulation Resistance	1000MΩ min				4 < L ≤ 16	±0.1°	比例	1:1	
Withstanding Voltage	800V AC/minute	插针	H65	镀锡	1 < L ≤ 4	±0.05°	单位	MM	
Temperature Range	-20 C to +85 C	基座	PA66	白	L ≤ 1	±0.05°	编号	1/1	
Applicable wire Range	AWG #28 to #22	部件	材质	颜色	未详细说明之公差		版本	BY/A2019	
								名称	2510-立式针座
								型号	2510-A