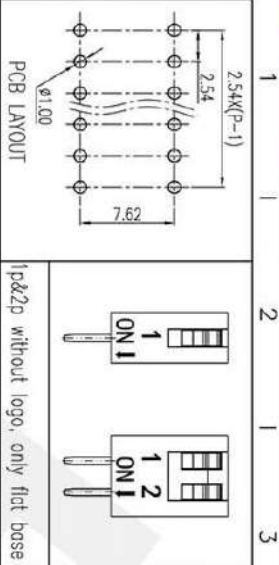
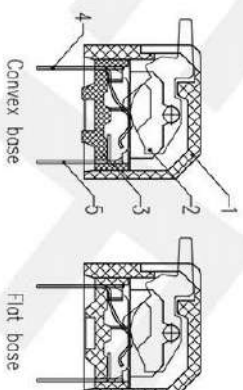
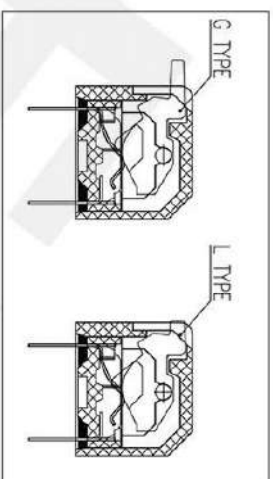
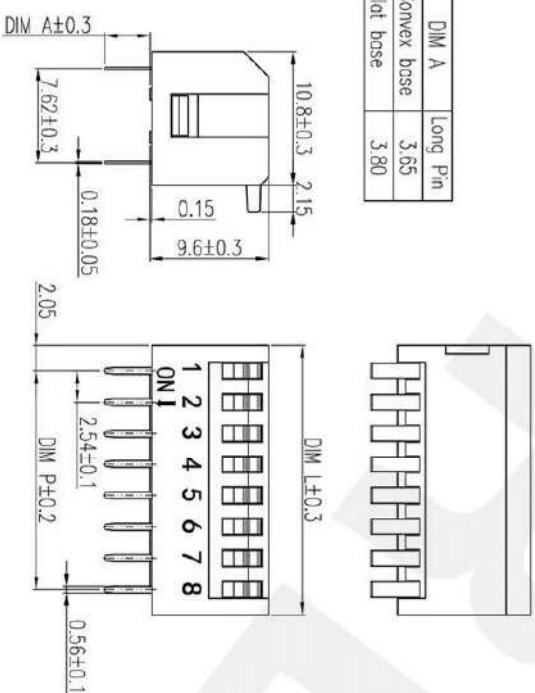


REV	ECN	CONTENT	CHECK	DATE
V0.0		ORIGINAL	LJ	2019.01.13
V1.0		arrange the drawing	WL	2020.06.03

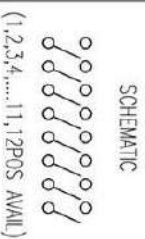


DIM A	Long Pin
Convex base	3.65
Flat base	3.80



- SPECIFICATION:**
- Rating: 25mA, 24VDC
Switching: 100mA, 50VDC
Non-Switching: 100mA, 50VDC
 - Contact Resistance: 50mΩmax
 - Insulation Resistance: 100MΩ min/500 VDC
 - Withstand Voltage: 500VAC for 1 minute
 - Operation Force: 1000g max
 - Mechanical Life: min 2000 cycles
 - Operation Temperature: -40C~+85C
 - Storage Temperature: -40C~+85C
 - RoHS Compliance

SOLDERING INFORMATION:
Manual Soldering: 30W iron, 320±5C, 3S max
Wave Soldering: 250±10C, 5S max
Keep in "off" position during soldering



(1,2,3,4.....11,12POS. AVAIL)

POLES	DIM P	DIM L	APP.	DATE	NAME	DWGNO.	SHEET	PROJECTION-METHOD
1	/	4.11	APP.	2020.6.3			1/1	
2	2.54	6.65	CHK.	2020.6.3				
3	5.08	9.19	DWG	2020.6.3				
4	7.62	11.73						
5	10.16	14.27						
6	12.70	16.81						
7	15.24	19.35						
8	17.78	21.89						
9	20.32	24.43						
10	22.86	26.97						
11	25.40	29.51						
12	27.94	32.05						

General tolerance in mm

	over	to	over	to	over	to	over	to	over	to	over	to	over	to	over	to	over	to	
0	to	3	to	6	to	30	to	120	to	400	to	1000	to	3	to	6	to	30	
±0.15	±0.2	±0.25	±0.3	±0.5	±0.8	±0.2	±0.5	±10	±1°	±30	±20	0.5	0.2	0.3	0.5				

radii and chamfers

	over	to	over	to	over	to	over	to	over	to	over	to	over	to	over	to	over	to	
0	to	3	to	6	to	30	to	120	to	400	to	1000	to	3	to	6	to	30	
±0.15	±0.2	±0.25	±0.3	±0.5	±0.8	±0.2	±0.5	±10	±1°	±30	±20	0.5	0.2	0.3	0.5				

shorter angle side

	over	to	over	to	over	to	over	to	over	to	over	to	over	to	over	to	over	to	
0	to	3	to	6	to	30	to	120	to	400	to	1000	to	3	to	6	to	30	
±0.15	±0.2	±0.25	±0.3	±0.5	±0.8	±0.2	±0.5	±10	±1°	±30	±20	0.5	0.2	0.3	0.5				

