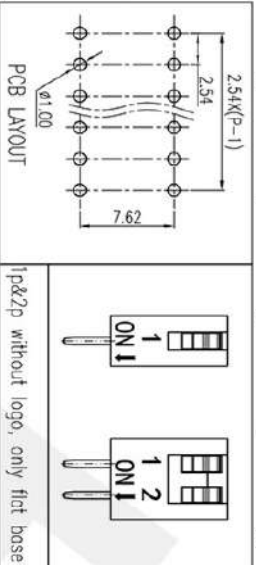
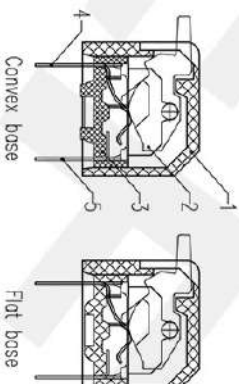
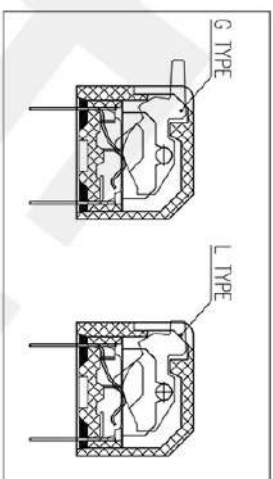
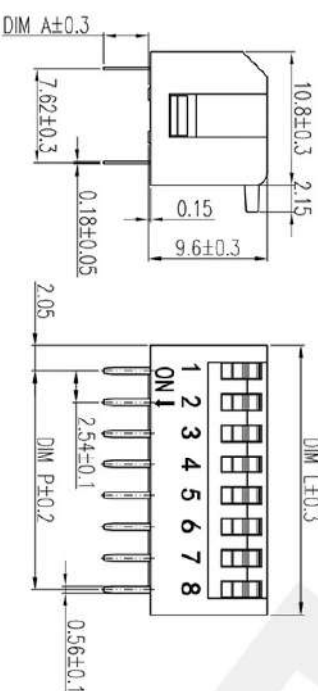


REV	ECN	CONTENT	CHECK	DATE
V0.0		ORIGINAL	LJ	2019.01.13
V1.0		arrange the drawing	WL	2020.06.03

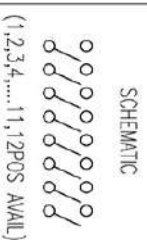


DIM A	Long Pin
Convex base	3.65
Flat base	3.80



- SPECIFICATION:**
- Rating:
 - Switching: 25mA, 24VDC
 - Non-Switching: 100mA, 50VDC
 - Contact Resistance: 50mΩmax
 - Insulation Resistance: 100MΩ min/500 VDC
 - Withstand Voltage: 500VAC for 1 minute
 - Operation Force: 1000g max
 - Mechanical Life: min 2000 cycles
 - Operation Temperature: -40C~+85C
 - Storage Temperature: -40C~+85C
 - RoHS Compliance

SOLDERING INFORMATION:
 Manual Soldering: 30W iron, 320±5C, 3S max
 Wave Soldering: 250±10C, 5S max
 Keep in "off" position during soldering



POLES	DIM P	DIM L
1	/	4.11
2	2.54	6.65
3	5.08	9.19
4	7.62	11.73
5	10.16	14.27
6	12.70	16.81
7	15.24	19.35
8	17.78	21.89
9	20.32	24.43
10	22.86	26.97
11	25.40	29.51
12	27.94	32.05

ITEM	NAME OF PART	NO. OF PART	QTY	MATERIAL	NOTE
1	Housing	XX	1	Thermoplastic	UL94V-0
2	Actuator	XX	1	Thermoplastic	UL94V-0
3	Base	XX	1	Thermoplastic	UL94V-0
4	Pin1	XX	P	Copper Alloy	Gold Plated
5	Pin2	XX	P	Copper Alloy	Gold Plated

General tolerance in mm		radii and chamfers		shorter angle side		=		//	
over	to	over	to	over	to	over	to	over	to
0	3	0.5	3	0	50	0	100	0	150
3	6	0.5	6	50	120	100	150	150	200
6	30	0.5	30	120	400	150	500	200	1000
30	120	0.5	120	400	1000	500	1000	1000	1000
120	400	0.5	400	1000	1000	1000	1000	1000	1000
400	1000	0.5	1000	1000	1000	1000	1000	1000	1000

1	2	3	4	5	6	7	8
±0.15	±0.2	±0.25	±0.3	±0.5	±0.8	±0.2	±0.5
1	2	3	4	5	6	7	8

