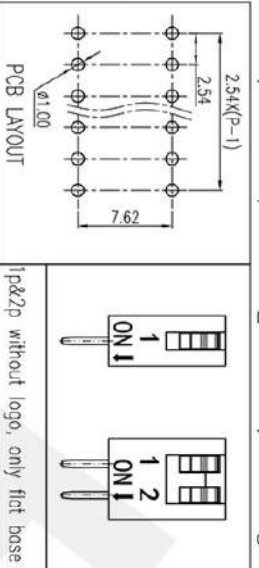
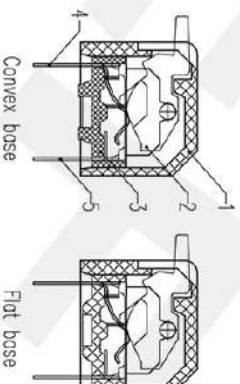
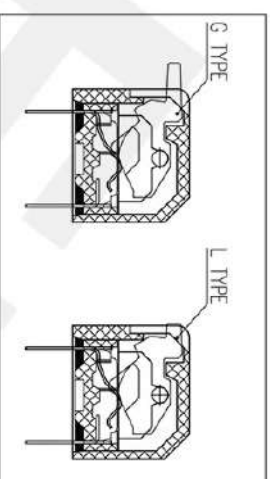
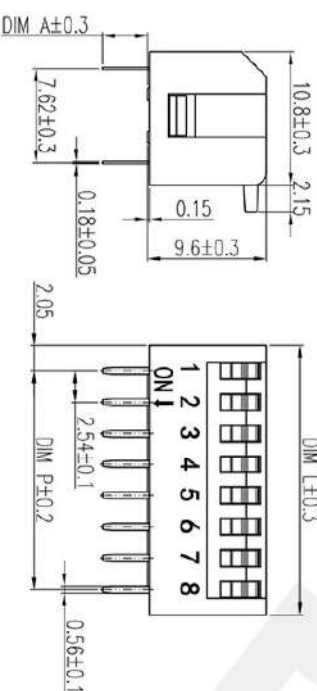


REV	ECN	CONTENT	CHECK	DATE
V0.0		ORIGINAL	LJ	2019.01.13
V1.0		arrange the drawing	WL	2020.06.03



DIM A	Long Pin
Convex base	3.65
Flat base	3.80



- SPECIFICATION:**
- Rating: 25mA, 24VDC
Switching: 100mA, 50VDC
Non-Switching: 100mA, 50VDC
 - Contact Resistance: 50mΩmax
Initial:
 - Insulation Resistance: 100MΩ min/500 VDC
 - Withstand Voltage: 500VAC for 1 minute
 - Operation Force: 1000g max
 - Mechanical Life: min 2000 cycles
 - Operation Temperature: -40°C~+85°C
 - Storage Temperature: -40°C~+85°C
 - RoHS Compliance

SOLDERING INFORMATION:
Manual Soldering: 30W iron, 320±5°C, 3S max
Wave Soldering: 250±10°C, 5S max
Keep in "off" position during soldering



General tolerance in mm		radii and chamfers		shorter angle side		=		//	
over	to	over	to	over	to	over	to	over	to
0	3	0.5	3	0	100	0	100	0	150
3	6	1.20	4.00	10	50	0	100	150	150
6	30	4.00	1000	3	6	all	100	150	150
±0.15	±0.2	±0.25	±0.3	±0.5	±0.8	±1°	±30°	0.5	0.2

POLES	DIM P	DIM L
1	/	4.11
2	2.54	6.65
3	5.08	9.19
4	7.62	11.73
5	10.16	14.27
6	12.70	16.81
7	15.24	19.35
8	17.78	21.89
9	20.32	24.43
10	22.86	26.97
11	25.40	29.51
12	27.94	32.05

ITEM	NAME OF PART	NO. OF PART	QTY	MATERIAL	NOTE
1	Housing	XX	1	Thermoplastic	UL94V-0
2	Actuator	XX	1	Thermoplastic	UL94V-0
3	Base	XX	1	Thermoplastic	UL94V-0
4	Pin1	XX	P	Copper Alloy	Gold Plated
5	Pin2	XX	P	Copper Alloy	Gold Plated

APP.	DATE	DATE	DATE	DATE
UN	2020.6.3	2020.6.3	2020.6.3	2020.6.3

NAME	DWGNO.	SHEET	PROJECTION-METHOD
W20004302		1/1	

